

**RESOLUTION BY THE MADISON ATHENS-CLARKE OCONEE
REGIONAL TRANSPORTATION STUDY (MACORTS)
POLICY COMMITTEE**

WHEREAS, administrative modifications to the Transportation Improvement Program (TIP) must be approved by the MACORTS Policy Committee and,

WHEREAS, the Georgia Department of Transportation's State Transportation Improvement Program (STIP) and the MACORTS TIP must match, the following item has been modified in the FY 2015 – 2018 Transportation Improvement Program following the transportation planning process:

- The Greenway Enhancement Project (PI# 0007637) construction phase of the project was moved from FY 2015 to FY 2016. The amount of funding decreased from \$2,087,768 to \$1,555,634.
- The Bike Trail / Rail to Trail Project (PI# 0007561) construction and utilities funding was moved from FY 2015 to FY 2016. The total amount of funding increased from \$3,535,252 to \$3,768,463.
- The US 441 / SR 24 South Widening (PI# 013613) preliminary engineering phase was moved from FY 2015 to FY 2016 with no change in funding.
- The expenditure table in the Financial Section was corrected to be consistent with the changes to the document.

NOW THEREFORE, BE IT RESOLVED that the MACORTS Policy Committee modifies the FY 2015 – 2018 Transportation Improvement Program to include these changes.

CERTIFICATION

I hereby certify that the above is a true and correct copy of a Resolution adopted by the Madison Athens-Clarke Oconee Regional Transportation Study Policy Committee at their meeting held on July 8, 2015.



Nancy Denson
MACORTS Policy Committee Chair

July 8, 2015



Brad Griffin
MACORTS Technical Coordinating Committee Chair

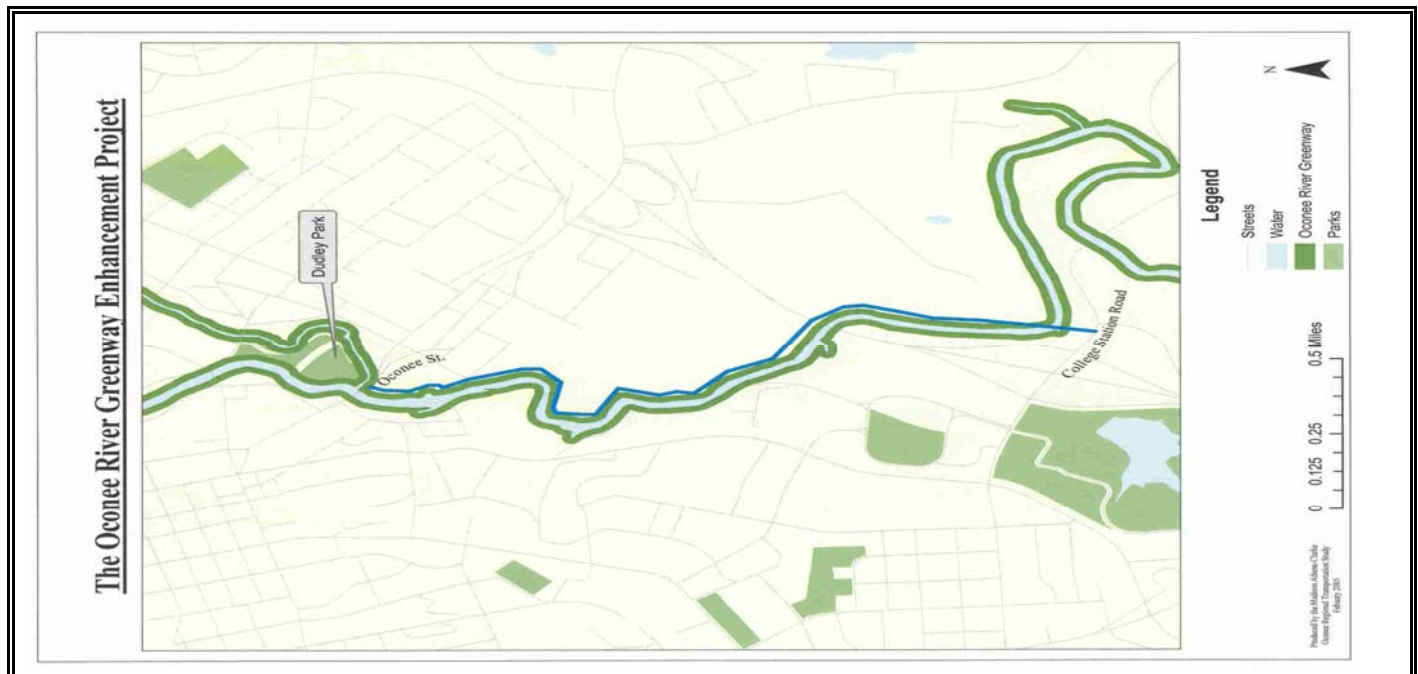
July 8, 2015

**MADISON ATHENS-CLARKE OCONEE REGIONAL TRANSPORTATION STUDY
FY 2015-2018 TRANSPORTATION IMPROVEMENT PROGRAM**

| | | | |
|--|-------------------------------------|---------------------------------------|-----------------------|
| PROJECT NAME: Greenway Enhancement in Athens-Clarke County Oconee Rivers Greenway Enhancement Project: Ext. to College Station Rd. | | TIP #: earmark | Fund: LY10 |
| PROJECT DESCRIPTION: This project will provide an extension of the current Greenway along the east side of the North Oconee River from Oconee St. to College Station Rd. Bridge rehabilitation will be included on the vehicular bridge over the N. Oconee River. | | Estimated Cost: \$3,000,000 | County: Clarke |
| | | P.I. #: 7637 | |
| | | GDOT Prj.#: CSHPP-0007-00(637) | |
| Length (miles): 1.52 | # of existing lanes: N/A | # of lanes planned: N/A | |
| DOT District #: 1 | Congressional Dist. #: 9, 10 | RDC: Northeast Georgia | |
| Average Daily Traffic Volume | 2011 ADT: N/A | 2035 (projected): N/A | |
| COMMENTS/REMARKS: Currently, the Greenway connects Cook's Trail to the Sandy Creek Nature Center and UGA's Greenway. Future funding will be approximately \$1.3 million from SPLOST 2005. HPP funding was awarded to this project in the amount of \$1,856,000 (federal). Construction funds are programmed in 2015 in the GDOT Work Program. | | | |

| PROJECT PHASE | SOURCE | FY2015 | FY2016 | FY2017 | FY2018 | TOTAL |
|------------------------------|-------------|-----------|-------------|--------|--------|-------------|
| Preliminary Engineering (\$) | Local | | | | | \$0 |
| Land Acquisition (\$) | Local | \$211,000 | | | | \$211,000 |
| Construction Costs (\$) | Fed/Local | | \$1,555,634 | | | \$1,555,634 |
| PROJECT COST | | \$211,000 | \$1,555,634 | \$0 | \$0 | \$1,766,634 |
| Federal Cost (\$) | | \$0 | \$1,130,946 | \$0 | \$0 | \$1,130,946 |
| State Cost (\$) | | \$0 | \$0 | \$0 | \$0 | \$0 |
| Local Cost (\$) | SPLOST 2005 | \$211,000 | \$424,688 | \$0 | \$0 | \$635,688 |

PROJECT LOCATION

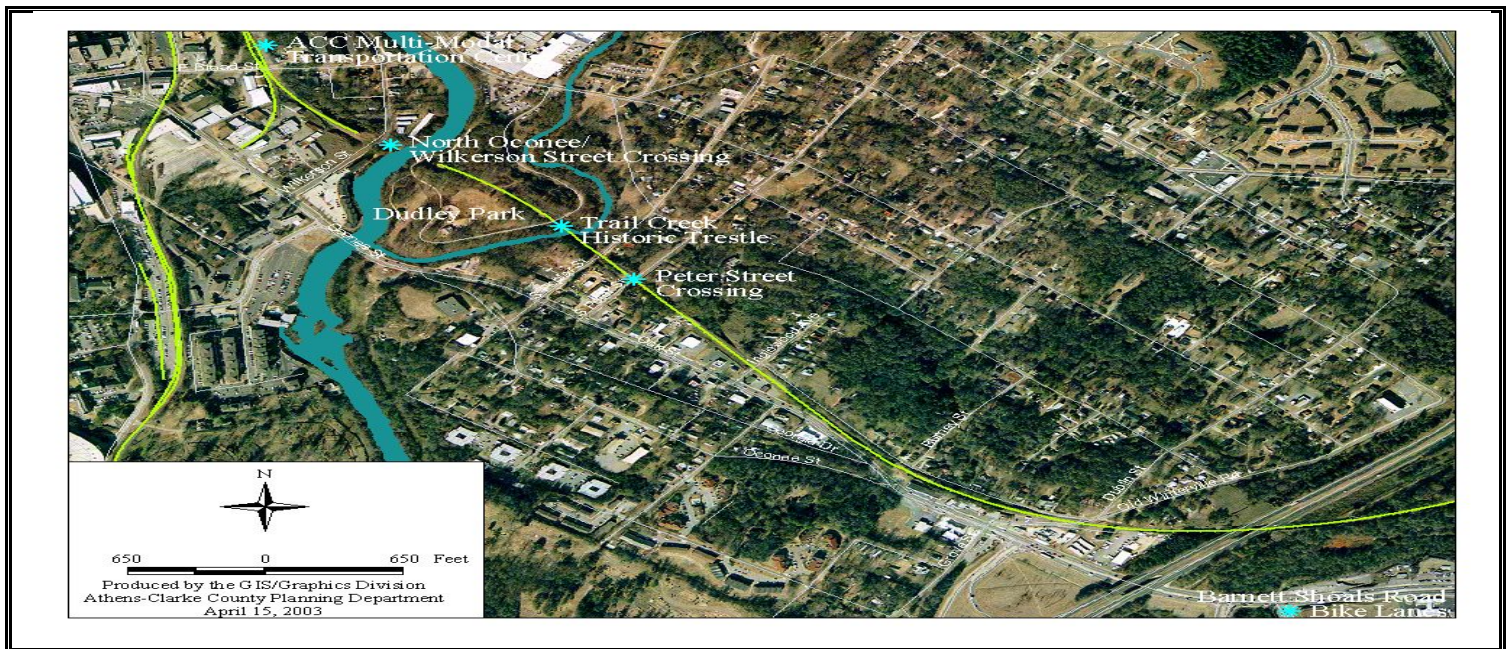


**MADISON ATHENS-CLARKE OCONEE REGIONAL TRANSPORTATION STUDY
FY 2015-2018 TRANSPORTATION IMPROVEMENT PROGRAM**

| | | | |
|---|-------------------------------------|---------------------------------------|-------------------|
| PROJECT NAME: Bike Trail in Athens-Clarke Co. / Rail to Trail | | TIP #: Earmark | Fund: LY10 |
| PROJECT DESCRIPTION: This project would provide for the conversion of the abandoned rail line to a multi-use trail connecting the Multi-modal Center to Dudley Park and to the existing bicycle facilities along Barnett Shoals Rd. | | Estimated Cost: \$7,648,000 | |
| | | County: Clarke | |
| | | P.I. #: 7561 | |
| | | GDOT Prj.#: CSHPP-0007-00(561) | |
| Length (miles): 1 | # of existing lanes: N/A | # of lanes planned: N/A | |
| DOT District #: 1 | Congressional Dist. #: 9, 10 | RDC: Northeast Georgia | |
| Average Daily Traffic Volume | 2011 ADT: N/A | 2035 (projected): N/A | |
| COMMENTS/REMARKS: SPLOST 2005 has approximately \$ 2.2 million allocated to this project. Also, HPP funds in the amount of \$1,120,000 (federal) will be used for ROW and constuction of the Rail to Trail. | | | |

| PROJECT PHASE | SOURCE | FY2015 | FY2016 | FY2017 | FY2018 | TOTAL |
|------------------------------|-------------|------------|--------------------|------------|------------|--------------------|
| Preliminary Engineering (\$) | Local | | | | | \$0 |
| Right-of-Way (\$) | Fed/Local | | | | | \$0 |
| Utilities (\$) | Local | | \$50,000 | | | \$50,000 |
| Construction Costs (\$) | Fed/Local | | \$3,718,463 | | | \$3,718,463 |
| PROJECT COST | | \$0 | \$3,768,463 | \$0 | \$0 | \$3,718,463 |
| Federal Cost (\$) | | \$0 | \$79,888 | \$0 | \$0 | \$79,888 |
| State Cost (\$) | | \$0 | \$0 | \$0 | \$0 | \$0 |
| Local Cost (\$) | SPLOST 2005 | \$0 | \$3,688,575 | \$0 | \$0 | \$3,688,575 |

PROJECT LOCATION



**MADISON ATHENS-CLARKE OCONEE REGIONAL TRANSPORTATION STUDY
FY 2015-2018 TRANSPORTATION IMPROVEMENT PROGRAM**

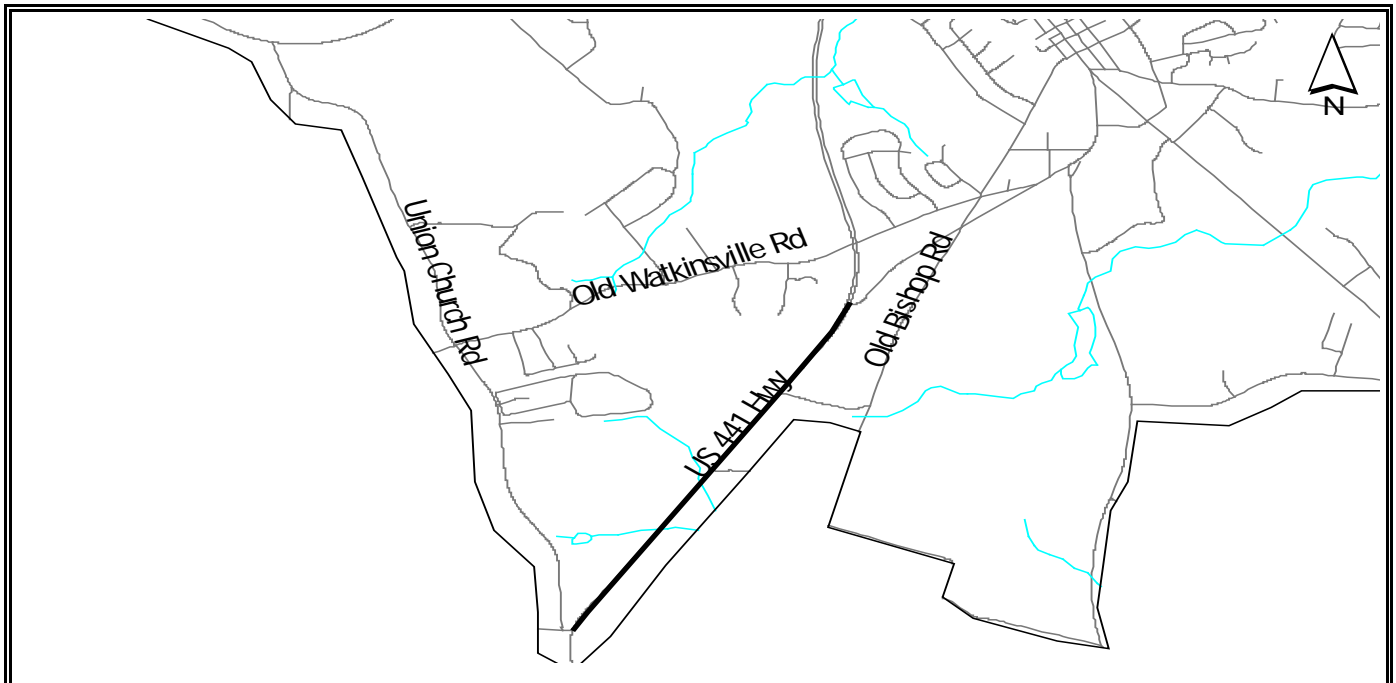
| | | | |
|--|----------------------------------|--|-------------------|
| PROJECT NAME: US 441 / SR 24 South Widening | | TIP # R-33 | Fund: M001 |
| PROJECT DESCRIPTION: Widen US 441 to 4 lanes from the Watkinsville Bypass south to the MACORTS boundary at SR 186. Project continues to north of Apalachee River. The project includes a new location bypass around the city of Bishop. **20% of project is within the MPO | | <i>Estimated Cost:</i> \$66,500,000 | |
| | | <i>Estimated Cost: (MPO area)</i> \$13,300,000 | |
| | | <i>County:</i> Oconee | |
| | | <i>PI#:</i> 013613 | |
| | | <i>GDOT Prj.#:</i> EDS00-0441-00(043) | |
| <i>Length (miles):</i> 1.8 | <i># of existing lanes:</i> 2 | <i># of lanes planned:</i> 4 | |
| <i>DOT District #:</i> 1 | <i>Congressional Dist. #:</i> 10 | <i>RDC:</i> Northeast Georgia | |
| <i>Average Daily Traffic Volume 2013 ADT:</i> 9,850 | | <i>2040 (projected):</i> 20,276 | |

COMMENTS/REMARKS:

PE is programmed in FY 2016. Right-of-way and Construction are programmed in Long Range.

| PROJECT PHASE | SOURCE | FY2015 | FY2016 | FY2017 | FY2018 | TOTAL |
|------------------------------|-----------|--------|-------------|--------|--------|-------------|
| Preliminary Engineering (\$) | Fed/State | | \$1,000,000 | | | \$1,000,000 |
| Right-of-Way (\$) | Local | | | | | \$0 |
| Construction Costs (\$) | Fed/State | | | | | \$0 |
| PROJECT COST | | \$0 | \$1,000,000 | \$0 | \$0 | \$1,000,000 |
| Federal Cost (\$) | | \$0 | \$800,000 | \$0 | \$0 | \$800,000 |
| State Cost (\$) | | \$0 | \$200,000 | \$0 | \$0 | \$200,000 |
| Local Cost (\$) | | \$0 | \$0 | \$0 | \$0 | \$0 |

PROJECT LOCATION



DNR RECREATIONAL TRAILS - M940

| PI# | PROJECT DESCRIPTION | 15-'18 TIP PROJ. # | TIP | | | | | | | | | | | |
|-------------------------------------|-----------------------------|--------------------|--------|------|-----------|--------|------|-----------|--------|------|-----------|--------|------|------------------|
| | | | FY '15 | | | FY '16 | | | FY '17 | | | FY '18 | | |
| | | | PE | RW | CST | PE | RW | CST | PE | RW | CST | PE | RW | CST |
| N/A | DNR Trails - Lump Sum (Q94) | M940 | \$ - | \$ - | \$ 17,000 | \$ - | \$ - | \$ 17,000 | \$ - | \$ - | \$ 16,000 | \$ - | \$ - | \$ - |
| TOTAL COSTS BY PHASE | | | \$ - | \$ - | \$ 17,000 | \$ - | \$ - | \$ 17,000 | \$ - | \$ - | \$ 17,000 | \$ - | \$ - | \$ - |
| TOTAL COSTS BY FISCAL YEAR | | | | | \$ 17,000 | | | \$ 17,000 | | | \$ 17,000 | | | \$ - |
| AVAILABLE FUNDS FOR FY 15-18 | | | | | | | | | | | | | | \$ 51,000 |

BOND FUNDS - 41593 & 40302

| PI# | PROJECT DESCRIPTION | 15-'18 TIP PROJ. # | TIP | | | | | | | | | | | |
|-------------------------------------|--|--------------------|--------|------|---------------|--------|------|------|--------|------|------|--------|------|----------------------|
| | | | FY '15 | | | FY '16 | | | FY '17 | | | FY '18 | | |
| | | | PE | RW | CST | PE | RW | CST | PE | RW | CST | PE | RW | CST |
| 142060 | Mars Hill Rd/Experiment Station Rd Widening-Ph 1 (41593) | R-26 | | | \$ 23,384,000 | | | | | | | | | |
| 142060 | Mars Hill Rd/Experiment Station Rd Widening-Ph 1 (40302) | R-26 | | | \$ 590,103 | | | | | | | | | |
| TOTAL COSTS BY PHASE | | | \$ - | \$ - | \$ 23,974,103 | \$ - | \$ - | \$ - | \$ - | \$ - | \$ - | \$ - | \$ - | \$ - |
| TOTAL COSTS BY FISCAL YEAR | | | | | \$ 23,974,103 | | | \$ - | | | \$ - | | | \$ - |
| AVAILABLE FUNDS FOR FY 15-18 | | | | | | | | | | | | | | \$ 23,974,103 |

SAFE ROUTES TO SCHOOL - LU 10 / LU 20 / LU 30

| PI# | PROJECT DESCRIPTION | 15-'18 TIP PROJ. # | TIP | | | | | | | | | | | |
|-------------------------------------|--|--------------------|--------|------|-----------|--------|------|------|--------|------|------|--------|------|------------------|
| | | | FY '15 | | | FY '16 | | | FY '17 | | | FY '18 | | |
| | | | PE | RW | CST | PE | RW | CST | PE | RW | CST | PE | RW | CST |
| Lump | Safe Routes to School Non-infrastructure | | | | \$ 11,000 | | | \$ - | | | \$ - | | | \$ - |
| Lump | Safe Routes to School Infrastructure | | | | \$ 18,000 | | | \$ - | | | \$ - | | | \$ - |
| Lump | Safe Routes to School Any Project | | | | \$ 7,000 | | | \$ - | | | \$ - | | | \$ - |
| TOTAL COSTS BY PHASE | | | \$ - | \$ - | \$ 36,000 | \$ - | \$ - | \$ - | \$ - | \$ - | \$ - | \$ - | \$ - | \$ - |
| TOTAL COSTS BY FISCAL YEAR | | | | | \$ 36,000 | | | \$ - | | | \$ - | | | \$ - |
| AVAILABLE FUNDS FOR FY 15-18 | | | | | | | | | | | | | | \$ 36,000 |

Grand Total Programmed Funds \$ 51,187,413

LOCALLY FUNDED PROJECTS

| PI# | PROJECT DESCRIPTION | 15-'18 TIP PROJ. # | TIP | | | | | | | | | | | |
|-------------------------------------|--|--------------------|------------|------------|--------------|------------|------------|--------------|------------|------------|--------------|-----------|-----------|----------------------|
| | | | FY '15 | | | FY '16 | | | FY '17 | | | FY '18 | | |
| | | | PE | RW | CST | PE | RW | CST | PE | RW | CST | PE | RW | CST |
| N/A | A-CC ROW Protection Program | | | | | | | | | | | | | |
| N/A | A-CC Traffic Signal Replacement Program | | | | \$ 125,000 | | | \$ 130,000 | | | \$ 100,000 | | | \$ 100,000 |
| N/A | A-CC Pavement Management Program | | | | \$ 1,858,000 | | | \$ 1,700,000 | | | \$ 1,850,000 | | | \$ 2,148,000 |
| N/A | ATMS Expansion | | | | | | | \$ 50,000 | | | | | | \$ 50,000 |
| N/A | Oconee Co. Intersection Improvement Program | | | | | | | | | | | | | |
| N/A | Oconee Co. Pavement Management | | | | \$ 1,550,000 | | | \$ 1,550,000 | | | \$ 1,550,000 | | | \$ 1,550,000 |
| N/A | Oconee Co. Traffic Signal Replacement Program | | | | | | | | | | | | | |
| N/A | Oconee Co. Culvert Improv. & Replacement Prog. | | | | \$ 75,000 | | | \$ 75,000 | | | \$ 75,000 | | | \$ 75,000 |
| N/A | Oconee Co. Bridge Maint. & Improv. Program | | | | \$ 10,000 | | | \$ 10,000 | | | \$ 10,000 | | | \$ 10,000 |
| N/A | A-CC Sidewalk Improvement Program | | \$ 54,000 | \$ 25,000 | \$ 10,000 | \$ 50,000 | \$ 30,000 | \$ 693,000 | \$ 50,000 | \$ 30,000 | \$ 582,000 | \$ 50,000 | \$ 30,000 | \$ 523,000 |
| N/A | A-CC Bicycle Facilities System Improvements | | \$ 229,000 | \$ 14,000 | | | \$ 361,000 | \$ 441,000 | | | \$ 1,001,000 | | | \$ 671,000 |
| N/A | Tallassee Road at Lavender Road Realignment | R-13 | \$ 38,000 | \$ 30,000 | | | | \$ 310,000 | | | | | | |
| N/A | Oconee Rivers Greenway Network Plan | | | | | | | | | | | | | |
| N/A | Rail to Trail | EB-17 | | | \$ 620,000 | | | \$ 620,000 | | | | | | |
| N/A | Old Hull Road at Athena Drive Intersection | | \$ 50,000 | \$ 40,000 | | | | \$ 335,000 | | | | | | |
| N/A | Epps Bridge at Atlanta Highway | | \$ 60,000 | | | | | \$ 460,000 | | | | | | |
| N/A | US 29 / Danielsville Road | | \$ 240,000 | | | | | | \$ 300,000 | | | | | |
| N/A | Fowler Drive | | \$ 150,000 | | | | | | \$ 50,000 | | | | | \$ 613,000 |
| N/A | SR 10 Loop Connector | | | | | | | | \$ 500,000 | | | | | |
| N/A | Fowler Mill Drive Bridge Replacement | | \$ 40,000 | \$ 20,000 | | | | | | | \$ 280,000 | | | |
| N/A | Whitehall Road Hill Reduction | | | \$ 300,000 | | | | \$ 535,000 | | | | | | |
| N/A | Whit Davis Road at Cedar Shoals Road | | \$ 100,000 | | | | | | | | | | | |
| N/A | Mitchell Bridge Road Widening | | | | \$ 1,250,000 | | | | | | | | | |
| N/A | Whitehead Rd.at Tallassee Rd. Inters. Improv | | | | \$ 910,000 | \$ 240,000 | | | | \$ 75,000 | | | | |
| TOTAL COSTS BY PHASE | | | \$ 961,000 | \$ 504,000 | \$ 6,408,000 | \$ 290,000 | \$ 391,000 | \$ 6,909,000 | \$ 550,000 | \$ 455,000 | \$ 5,448,000 | \$ 50,000 | \$ 30,000 | \$ 5,740,000 |
| TOTAL COSTS BY FISCAL YEAR | | | | | \$ 7,873,000 | | | \$ 7,590,000 | | | \$ 6,453,000 | | | \$ 5,820,000 |
| AVAILABLE FUNDS FOR FY 15-18 | | | | | | | | | | | | | | \$ 27,736,000 |